



Name: **Foo-Foo v.2.0**
 Race: **Petbot**
 Appearance: **Cute cyber farret**

Player: **Gotha** Spent: **71**
 Ht: **34** Wt: **0,8** Age: **1** Unspent: **0**

CHARACTER SHEET

ST 7 ^[1] [0]	HP 8 ^[2] [0]	Basic Speed 5 [0]
DX 10 [0]	Will 10 [0]	Basic Move 10 ^[3] [0]
IQ 10 [0]	Per 10 [0]	BL 9.8 lb (ST×ST)/5
HT 10 [0]	FP 0 [0]	Thr 1d-3 Sw 1d-2
[1] -3 from 'Petbot ST Penalty'	[2] +1 from 'Petbot Hit Points Bonus'	[3] +5 from 'Petbot Basic Move Bonus'

TL 4 [0]	SM -4 ^[1]
[1] -4 from 'Petbot SM Penalty'	

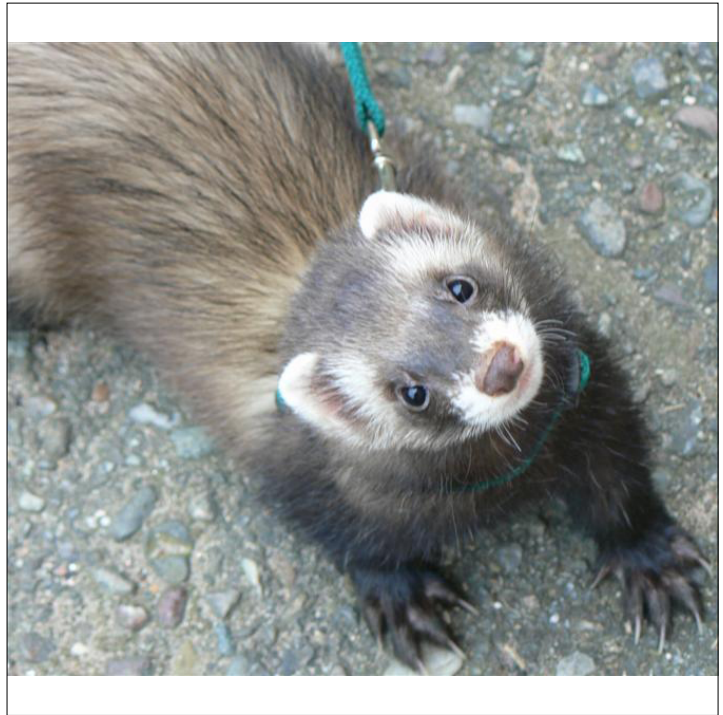
Vision	10 ^[1]	Taste/Smell	10 ^[2]	Death Check	10
Hearing	10	Fright Check	10	High Jump	1.39 yd
Touch	10	Consciousness	10	Broad Jump	5.67 yd
[1] Cond. +2 from 'Infravision' when target emits heat			[2] Cond. +4 from 'Discriminatory Smell' when it involves Smell		

PARRY		PARRY		BLOCK		DODGE		OTHER	
8				6		8			
DX				DX					
Loc.	DR	DB	HP	#	Loc.	DR	DB	HP	#
Eyes	0+5 ^[1]	0	1	—	Groin	0+5 ^[1]	0	—	—
Neck	0+5 ^[1]	0	—	—	Arms	0+5 ^[1]	0	5	—
Skull	2+5 ^[1]	0	—	—	Hands	0+5 ^[1]	0	3	—
Face	0+5 ^[1]	0	—	—	Legs	0+5 ^[1]	0	5	—
Torso	0+5 ^[1]	0	—	—	Feet	0+5 ^[1]	0	3	—
[1] +5 from 'Damage Resistance'									

LIFTING FEATS					
Name	1-Hand Lift ^[1]	2-Hand Lift ^[2]	Shove / Over ^[3]	Carry on Back ^[4]	Shift Slightly
Basic	20 lb	78 lb	117.6 lb	147 lb	490 lb
[1] Takes 2 seconds to complete			[3] Double with a running start		
[2] Takes 4 seconds to complete			[4] Lose 1 FP/sec while over X-Hvy enc.		

ENCUMBRANCE TABLE					
Name	None	Light	Med	Hvy	X-Hvy
Basic	9.8 lb	19.6 lb	29.4 lb	58.8 lb	98 lb
Ground	10 yd	8 yd	6 yd	4 yd	2 yd
Water	2 yd	1 yd	1 yd	1 yd	1 yd
Jump	10 yd	8 yd	6 yd	4 yd	2 yd
Dodge	8	7	6	5	4

REACTION MODIFIERS	
Appearance:	+0
Status:	+0
Other:	+0



TEMPLATES AND META-TRAITS	
Name	Pts
Machine {p. B263}	[25]
Features: Eight-hour energy reserve, No Fatigue Points, Wears out instead of aging	
Immunity to Metabolic Hazards	[30]
Injury Tolerance (No Blood; Unliving) {p. B60, P52}	[25]
Unhealing (Total) {p. B160}	[-30]
Petbot	[46]
Petbot ST Penalty -3 {p. B14}	[-30]
Petbot SM Penalty -4 {p. B19}	[0]
Petbot Hit Points Bonus 1 {p. B16}	[2]
Petbot Basic Move Bonus 5 {p. B17}	[25]
Accessory (Small Computer) {p. B100, PU2:10}	[1]
Accessory (Fire Extinguisher) {p. B100, PU2:10}	[1]
Absolute Direction (Requires Signal) {p. B34}	[4]
Doesn't Breathe {p. B49}	[20]
Discriminatory Smell {p. B49, P47}	[15]
Roll to memorize a scent: 10 (IQ), Roll to Smell: 14 (Taste/Smell+4)	
Damage Resistance 5 (Can't Wear Armor) {p. B46, P45}	[15]
Extra Legs (4 Legs) {p. B55, P81}	[5]
Infravision {p. B60, P87}	[10]
Roll to See: 10 (Per)	
Cond. +2 from 'Infravision' when target emits heat	
Telecommunication (Radio) (Secure) {p. B91, P81}	[12]
Range: 10 mi, Roll to Communicate: 10 (IQ)	
Claws (Sharp Claws) {p. B42}	[5]
Teeth (Sharp Teeth) {p. B91, P81}	[1]
Ultrahearing {p. B89, P51}	[5]
Roll to Hear: 10 (Per)	
Bad Grip -1 {p. B123}	[-5]
Electrical {p. B134}	[-20]
Horizontal {p. B138}	[-10]
Restricted Diet (Power Cells) (Very Common) {p. B151}	[-10]

POINTS SUMMARY	Pts
Basic Attributes, Secondary Characteristics	[0]
Advantages, Perks	[71]
Disadvantages, Quirks	[0]
Skills, Techniques	[0]
Total Points Spent:	71
Unspent Points:	0

MELEE ATTACKS								
Name	Skill	Parry	Damage	Reach	ST	Wt	LC	Notes
Bite	10	-	1d-4 cut	C	-	-	-	
Kick	8	-	1d-3 cut	C,1	-	-	-	
Punch	10	8	1d-4 cut	C	-	-	-	

SLAM TABLE			
Mvmt.	1-3	4-6	7-12
Dmg.	1d-3	1d-2	1d-1